

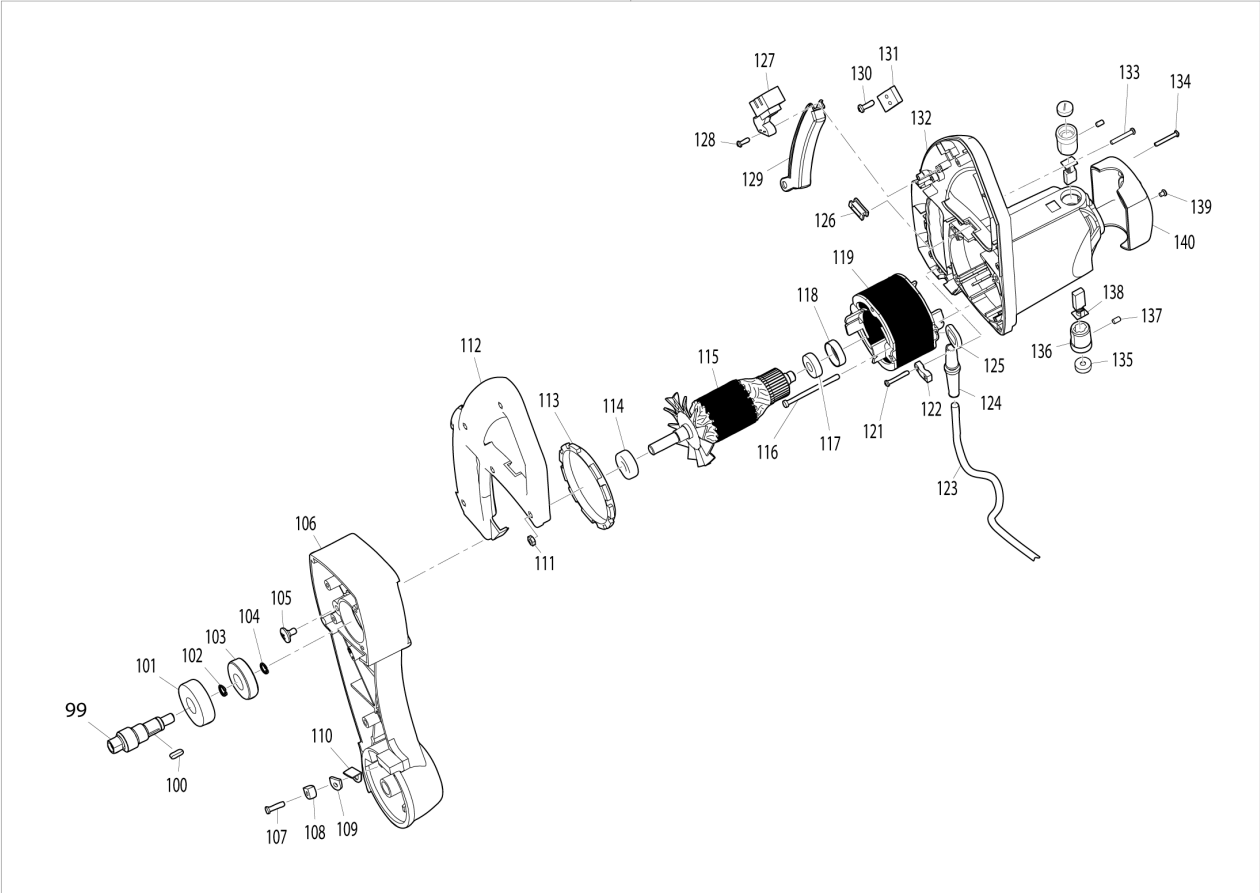


Diagram / Parts List

MLS100
MITER SAW



96



MX

MEXICO

MLS100 / MITER SAW

Item	Sub	Parts No.	Parts Description	Qty	I/C	E/C No.	Close No.	Remark
001		JM23000001	GRIP	1				
002		JM23000002	HANDLE BRACKET	1				
003A		JM23000003	SPRING WASHER8	2				
003B		JM23000003	SPRING WASHER8	1				
004A		JM23000004	HEX SOCKET HEAD BOLT M8X25	2			Y08247	
004B		JM00000207	HEX SOCKET HEAD BOLT M8X30	1				
004-1A		JM00000207	HEX SOCKET HEAD BOLT M8X30	1	<	Y08247		
005A		JM23000005	KNOCK SPRING	1			Y06553	
005B		JM23000200	KNOCK SPRING SET	1				
	D10		INC. 152,153					
005-1A		JM23000200	KNOCK SPRING SET	1	<	Y06553		
	D10		INC. 152,153			Y06553		
006		JM23000006	LOCK KNOB FOR EXT.WINGS	2				
007A		JM23000007	MITER ANGLE LABEL	1			Y08281	
008A		JM23000008	RIVET	2			Y08281	
009A		JM23000009	BASE COMP	1			Y08281	
	D10		INC. 7,8,10				Y08281	
009B		JM00000066	BASE COMP	1				
	D10		INC. 177					
009-1A		JM00000066	BASE COMP	1	O	Y08281		
	D10		INC. 10,177			Y08281	Y08723	
	D11		INC. 177			Y08723		
010A		810965-6	CAUTION LABEL	1			Y08723	
011		JM23000011	BASE SUPPORTER	1				
012		JM23000012	SCREW	1				
013A		JM23000013	FLAT WASHER10	2			Y08247	
013B		JM23000013	FLAT WASHER10	1				
013-1A		JM23000013	FLAT WASHER10	1	O	Y08247		
014		JM23000014	WAVE WASHER 6	1				
015		JM23000015	ANTI-LOOSE NUTM10	1				
016		JM23000016	SLIDE PLATE	2				
017		JM23000017	MITER ANGLE POINTER	1				
018A		JM23000018	COUNTERSUNK HEAD SCREW M4X10	5			Y08247	
018B		JM23000018	COUNTERSUNK HEAD SCREW M4X10	3				
018-1A		JM23000018	COUNTERSUNK HEAD SCREW M4X10	3	O	Y08247		
019		JM23000019	PIVOT	1				
020		JM23000141	KERF BOARD BLUE	1			Y08723	
020-1		JM23000141	KERF BOARD BLUE	1	O	Y08723		
021		JM23000021	TURN BASE COMP.	1				
022		JM23000022	PROTECTION NET	1				
023A		JM23000023	GUIDE RULE	1			Y06854	
023B		JM23000204	GUIDE RULE	1			Y08313	
023-1A		JM23000204	GUIDE RULE	1	S	Y06854	Y08313	
023-1B		JM23000023	GUIDE RULE	1	X	Y08313		
023-2A		JM23000023	GUIDE RULE	1	X	Y08313		
024		JM23000024	HEX.BOLT M8X30	4				
025A		JM23000003	SPRING WASHER8	4				
025B		JM23000025	SPRING WASHER8	4				
026		JM23000026	FLAT WASHER8	4				
027A		JM23000027	HEX. BOLT M8 X 20	2			Y08248	
027B		JM23000024	HEX.BOLT M8X30	2				
027-1A		JM23000024	HEX.BOLT M8X30	2	X	Y08248		
028		JM23000028	HEX. NUT M8	2				
029		JM23000029	BEVEL POINTER	1				
030		JM23000030	FLAT WASHER5	1				
031A		JM23000031	SPRING WASHER5	1			Y08248	
032		JM23000032	PAN HEAD SCREW M5 X 10	1				
033		JM23000033	HEX. BOLT M8X16	1				
034		JM23000028	HEX. NUT M8	1				
035A		JM23000034	RIVET	2			Y08281	
036A		JM23000035	SCALE LABEL	1			Y08281	
037		JM23000036	ARM COMPLETE	1				
	D10		INC. 35,36				Y08281	
038		JM23000037	SHAFT	1				
039A		JM23000038	LINK SUPPORT PLATE	1			Y05839	

A:
B:

Interchange
O : Yes
X : No
< : the new part can be substituted for the current.
> : the current part can be substituted for the new.
S : Interchangeable as a set.

MX

MEXICO

MLS100 / MITER SAW

Item	Sub	Parts No.	Parts Description	Qty	I/C	E/C No.	Close No.	Remark
039B		JM23000038	LINK SUPPORT PLATE	1				
039-1A		JM23000038	LINK SUPPORT PLATE	1		Y08249		
040		JM23000039	PAN HEAD SCREW M6 X 16	3				
041		JM23000040	SPRING WASHER6	3				
042		JM23000041	FLAT WASHER6	3				
043		JM23000042	CLIP	1				
044		JM23000030	FLAT WASHER5	1				
045		JM23000031	SPRING WASHER5	1				
046		JM23000032	PAN HEAD SCREW M5 X 10	1				
047		JM23000143	KNOB BOLT M10 BLUE	1			Y08723	
047-1		JM23000143	KNOB BOLT M10 BLUE	1	O	Y08723		
048		JM23000013	FLAT WASHER10	1				
049		JM23000044	ANTI-LOOSE NUTM12	1				
050		JM23000045	FLAT WASHER12	1				
051		JM23000046	LOCK PIN CAP	1				
052		JM23000047	O RING	1				
053		JM23000048	PIN	1				
054		JM23000049	LIMIT PIN	1				
055		JM23000050	TORSIONAL SPRING	1				
056		JM23000051	RING	1				
057		JM23000052	HEX. SOCKET HEAD BOLT M6 X 20	4				
058		JM23000040	SPRING WASHER6	4				
059		JM23000041	FLAT WASHER6	4				
060		JM23000030	FLAT WASHER5	2				
061		JM23000031	SPRING WASHER5	2				
062A		JM23000032	PAN HEAD SCREW M5 X 10	2			Y08249	
062B		JM23000069	PAN HEAD SCREW M5X12	2				
062-1A		JM23000069	PAN HEAD SCREW M5X12	2	X	Y08249		
063		JM23000053	PLATE	1				
064		JM23000054	BLADE LOCK BOLT M8X20(LH)	1			Y08723	
064-1		JM23000054	BLADE LOCK BOLT M8X20(LH)	1	O	Y08723		
065		JM23000055	STEPPED BOLT M5	1				
066		JM23000056	BUSH	1				
067		JM23000057	STEPPED BOLT M6	1				
068		JM23000058	LINK COMP.	1				
069A		JM23000059	DUST NOZZLE	1			Y05117	
069B		JM23000178	DUST NOZZLE 38	1			Y08313	
069-1A		JM23000178	DUST NOZZLE 38	1	<	Y05117	Y08313	
069-1B		JM23000059	DUST NOZZLE	1	O	Y08313	Y08723	
069-2A		JM23000059	DUST NOZZLE	1	O	Y08313	Y08723	
069-2B		JM23000178	DUST NOZZLE 38	1	O	Y08723		
069-3A		JM23000178	DUST NOZZLE 38	1	O	Y08723		
070A		JM23000060	PAN HEAD SCREW M4	1			Y05117	
070B		JM23000138	PAN HEAD SCREW M4X10	2				
070-1A		JM23000060	PAN HEAD SCREW M4	2	O	Y05117	Y08249	
070-2A		JM23000138	PAN HEAD SCREW M4X10	2	X	Y08249		
071A		JM23000146	BLADE CASE COMP.	1			Y05117	
	D10		INC. 72-74				Y05117	
071B		JM00000065	BLADE CASE COMPLETE	1				
071-1A		JM23000180	BLADE CASE COMP.	1	O	Y05117	Y08248	
	D10		INC. 72-74			Y05117	Y08248	
071-2A		JM00000065	BLADE CASE COMPLETE	1	X	Y08248		
072		JM23080002	MAKITA LABEL	1				
073A		817667-5	CAUTION LABEL	1				
074A		810968-0	CAUTION LABEL	1				
075		JM23000063	LIMIT RING	1				
076A		JM23000064	SCREW	1			Y05041	
077		JM23000065	FLANGE	2				
078		JM23000066	LOCK SPRING	1				
079		JM23000067	SHAFT LOCK	1				
080		JM23000068	COVER	1				
081		JM23000030	FLAT WASHER5	2				
082A		JM23000031	SPRING WASHER5	2			Y08248	
082B		JM23000031	SPRING WASHER5	2				
082-1A		JM23000025	SPRING WASHER8	2	X	Y08248		

A:
B:Interchange
O : Yes
X : No
< : the new part can be substituted for the current.
> : the current part can be substituted for the new.
S : Interchangeable as a set.

MX	MEXICO
-----------	---------------

MLS100 / MITER SAW

Item	Sub	Parts No.	Parts Description	Qty	I/C	E/C No.	Close No.	Remark
083		JM23000069	PAN HEAD SCREW M5X12	2				
084		JM23000070	FLAT WASHER16	1				
085		JM23000071	ANTI-LOOSE NUT16	1				
086		JM23000072	SAFETY COVER COMP.	1				
087		JM23000073	TORSION SPRING	1				
088		JM23000074	SQUARE NECK BOLTM6X10	1				
089		JM23000075	WHEEL	1				
090		JM23000076	PUSH NUT	1				
091		JM23000077	STEPPED BOLT M6	1				
092		JM23000078	RUBBER SLEEVE	1				
093		JM23000079	FIX PLATE	1				
094		JM23000080	ANTI-LOOSE NUTM6	1				
095		JM23000081	STEPPED BOLT M5	1				
097A		810964-8	CAUTION LABEL	1				
098A		JM23080055	NAME PLATE	1				
099		JM23000084	SPINDLE	1				
100		JM23000085	KEY5X10	1				
101		JM23000086	BALL BEARING 6304-RZ	1				
102		JM23000087	RETAINING RING S-20	1				
103		JM23000088	HELICAL GEAR	1				
104		JM23000089	RETAINING RING S-16	1				
105		JM23000090	TRUSS HEAD SCREW M8X12	1				
106		JM23000091	GEAR HOUSING COMP.	1				
107		JM23000092	PAN HEAD SCREW M5 X 25	1			Y08634	
107-1		JM23000092	PAN HEAD SCREW M5 X 25	1	O	Y08634		
108		JM23000093	LIMIT PLATE	1				
109		JM23000094	LIMIT PAD	1				
110		JM23000095	ADJUST PAD	1				
111		JM23000096	HEX.NUTM4	6				
112A		JM23000195	HANDLE COVER	1			Y06473	
112B		JM23000149	HANDLE COVER	1				
112-1A		JM23000149	HANDLE COVER	1	S	Y06473		
113		JM23000098	FAN GUIDE	1				
114		JM23000099	BALL BEARING 6201Z	1				
115A		JM23000100	ARMATURE ASS'Y (230V)	1			Y08249	
	D10		INC. 114,117				Y08249	
115B		JM23000167	ARMATURE ASS'Y. (120V)	1				
	D10		INC. 114,117					
115-1A		JM23000167	ARMATURE ASS'Y. (120V)	1	X	Y08249		
	D10		INC. 114,117			Y08249		
116		JM23000101	SELF TAPING SCREWST4.8X70	2				
117		JM23000102	BALL BEARING 6001Z	1				
118		JM23000103	RUBBER RING	1				
119A		JM23000104	FIELD ASS'Y (230V)	1			Y08249	
	D10		INC. 120				Y08249	
119B		JM23000169	FIELD ASS'Y (120V)	1				
119-1A		JM23000169	FIELD ASS'Y (120V)	1	X	Y08249		
	D10		INC. 120			Y08249		
120A		JM23000105	NOISE SUPPRESSOR	2			Y05878	
121		JM23000106	SELF TAPING SCREWST4.2X12	2				
122		JM23000107	STRAIN RELIEF	1				
123A		JM23000160	POWER SUPPLY CORD ASSY IRAM	1			Y08249	
123B		JM23000163	POWER SUPPLY CORD ASSY NEMA	1				
123-1A		JM23000163	POWER SUPPLY CORD ASSY NEMA	1	X	Y08249		
124		JM23000109	CORD GUARD	1				
125		JM23000110	CHOKE COIL	1			Y08723	
125-1		JM23000110	CHOKE COIL	1	O	Y08723		
126		JM23000111	CLAMP	1				
127A		JM23000112	SWITCHCB21-B	1			Y08313	
127B		JM00000067	SWITCH	1				
127-1A		JM00000067	SWITCH	1	X	Y08313		
128A		JM23000113	SELF TAPING SCREWST 3X8	2			Y08281	
128B		JM23000106	SELF TAPING SCREWST4.2X12	2				
128-1A		JM23000106	SELF TAPING SCREWST4.2X12	2	X	Y08281		
129		JM23000114	SWITCH LEVER	1				

A:
B:

Interchange
O : Yes
X : No
< : the new part can be substituted for the current.
> : the current part can be substituted for the new.
S : Interchangeable as a set.

MX	MEXICO
-----------	---------------

MLS100 / MITER SAW

Item	Sub	Parts No.	Parts Description	Qty	I/C	E/C No.	Close No.	Remark
130A		JM23000115	SELF TAPING SCREWST4.2X12	2			Y08281	
130B		JM00000211	TAPING SCREW ST2.9X17	1				
130-1A		JM00000211	TAPING SCREW ST2.9X17	2	X	Y08281		
131		JM23000116	TERMINAL BASE	1				
132A		JM23000194	MOTOR HOUSING COMP.	1			Y06473	
	D10		INC. 97,136,137				Y06473	
132B		JM23000151	MOTOR HOUSING COMP.	1				
132-1A		JM23000151	MOTOR HOUSING COMP.	1	S	Y06473		
	D10		INC. 97,136,137			Y06473	Y08281	
	D11		INC. 97			Y08281		
133A		JM23000118	PAN HEAD SCREW M4X30	6			Y08249	
133B		JM00000212	TAPPING SCREW ST2.9X30	1				
133-1A		JM00000212	TAPPING SCREW ST2.9X30	1	X	Y08249		
134A		JM23000119	SELFTAPPING SCREW	1			Y08249	
134B		JM00000214	PAN HEAD SCREW M5X25	4				
134-1A		JM00000214	PAN HEAD SCREW M5X25	4	X	Y08249		
135		JM23000120	BRUSH HOLDER CAP	2				
136A		JM23000121	BRUSH HOLDER	2			Y08281	
137A		JM23000122	HEX. SOCKET HEAD BOLT M5 X 8	2			Y08281	
138		JM23000123	CARBON BRUSH 2PCS/SET	1				
139A		JM23000124	SELF TAPING SCREWST5.2X12	2			Y08249	
139B		JM00000213	SELF TAPING SCREW ST4.8X9	2				
139-1A		JM00000213	SELF TAPING SCREW ST4.8X9	2	X	Y08249		
140		JM23000125	MOTOR REAR COVER	1				
141		JM23000126	WING BOLT M6X12	1				
142A		JM23000132	BRACKET	1			Y08248	
143A		JM23000133	LOCK LEVER	1			Y08248	
144A		JM23000134	SPRING	1			Y08248	
145A		JM23000135	SCREW M5	1			Y08248	
146A		JM23000136	FLAT WASHER4	2			Y08248	
147A		JM23000137	SPRING WASHER4	2			Y08248	
148A		JM23000138	PAN HEAD SCREW M4X10	2			Y08248	
149A		JM23000139	ANTI-LOOSE NUTM5	1			Y08248	
150A		JM23000030	FLAT WASHER5	1			Y08248	
151A		JM23000183	CAPACITOR	1		Y05446	Y08249	
152A		JM23000185	LOCKING KNOB	1		Y05643		
152B		JM23000185	LOCKING KNOB	1				
153A		JM23000005	KNOCK SPRING	1		Y06553		
153B		JM23000005	KNOCK SPRING	1				
154A		JM23000138	PAN HEAD SCREW M4X10	1		Y08247		
154B		JM23000138	PAN HEAD SCREW M4X10	1				
155A		JM23000138	PAN HEAD SCREW M4X10	1		Y08247		
155B		JM23000138	PAN HEAD SCREW M4X10	1				
156A		JM23000136	FLAT WASHER4	2		Y08249		
156B		JM23000136	FLAT WASHER4	1				
157A		JM23000118	PAN HEAD SCREW M4X30	5		Y08249		
157B		JM23000118	PAN HEAD SCREW M4X30	5				
162A		JM23000014	WAVE WASHER 6	1		Y08249		
162B		JM23000014	WAVE WASHER 6	1				
164A		JM00000210	PAN HEAD SCREW M4X28	1		Y08249		
164B		JM00000210	PAN HEAD SCREW M4X28	1				
165A		JM23000030	FLAT WASHER5	4		Y08249		
165B		JM23000030	FLAT WASHER5	4				
166A		JM23000030	FLAT WASHER5	2		Y08247		
166B		JM23000030	FLAT WASHER5	2				
167A		JM23000137	SPRING WASHER4	1		Y08247		
167B		JM23000137	SPRING WASHER4	1				
168A		JM23000136	FLAT WASHER4	1		Y08247		
168B		JM23000136	FLAT WASHER4	1				
169A		JM00000206	FLAT HEAD SCREW M4X8	1		Y08247		
169B		JM00000206	FLAT HEAD SCREW M4X8	1				
170A		JM23000040	SPRING WASHER6	1		Y08247		
170B		JM23000040	SPRING WASHER6	1				
171A		JM23000041	FLAT WASHER6	1		Y08247		
171B		JM23000041	FLAT WASHER6	1				

A:
B:

Interchange
O : Yes
X : No
< : the new part can be substituted for the current.
> : the current part can be substituted for the new.
S : Interchangeable as a set.

