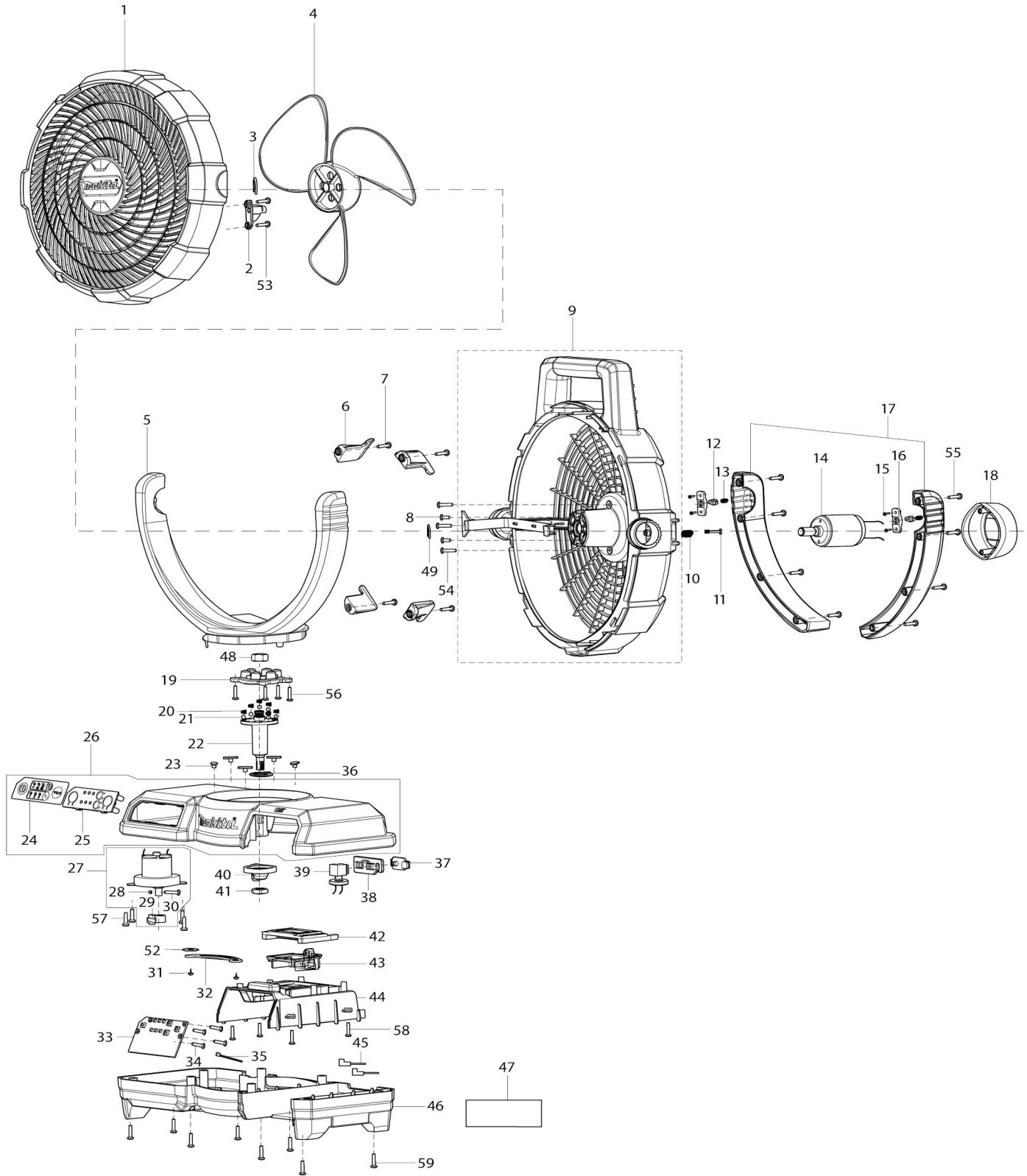


Model No.DCF203 CORDLESS FAN



Model No.DCF203 CORDLESS FAN

Artículo No.	No. de Partes	Descripción	Intercambialidad	Cantidad	Nuevo/Viejo	Nota 1	Nota 2
001	TE00000371	FRONT COVER OF THE BODY		1			
002	TE00000362	RELEASE BUTTON		1			
003	TE00000373	CIRCLIP		1			
004	TE00000374	FAN BLADE		1	*		
004-1	TE00000700	FAN BLADE	O	1			
005	TE00000375	FRONT COVER OF STAND		1			
006	TE00000376	SHELL HOOK		4			
007	TE00000028	TAPPING SCREW 3X14		4			
008	TE00000030	P.H.SCREW M3X5		2			
009	TE00000363	BACK COVER OF THE BODY		1			
010	TE00000378	SPRING		1			
011	TE00000364	LOCKED SCREW FOR FRONT HOUSING		1			
012	TE00000190	REPUESTOS PARA POM PARA CF100D		2			
013	TE00000197	RESORTE 1 PARA CF100D		2			
014	TE00000380	MOTOR		1			
015	TE00000203	SELF-TAPPING SCREW 2.5X8 PARA CF100D		4			
016	TE00000189	SMALL GEAR PRESSING PARTS PARA CF100D		2			
017	TE00000381	BACK COVER OF THE SUPPORT L R		1			
018	TE00000011	MOTOR COVER		1			
019	TE00000062	COPLER P/DCF300		1			
020	TE00000064	RESORTE DE COMPRESION P/DCF300		6			
021	TE00000063	BOLA DE ACERO 6 P/DCF300		6			
022	TE00000382	PRINCIPAL AXIS		1			
023	TE00000089	POM PLATE		5	*		
023-1	TE00000474	PLACA POM P/ CF001G - CF101D - DCF102 - DCF203 - DCF300	O	5			
024	TE00000365	SWITCH LABEL		1			
025	TE00000384	SWITCH PANEL		1			
026	TE00000385	UPPER BASE		1			
026		INC. 24,25					
027	TE00000386	SUB MOTOR		1			
027		INC. 28-30					
028	TE00000281	NUT M3		1			
029	TE00000282	SHAKE HEAD-POM 2		1			
030	TE00000102	PHILLIPS HEAD SCREW M3X14		1			
031	TE00000256	TAPPING SCREW 3X8		2			
032	TE00000277	SHAKE HEAD -CONNECTION IRON		1			
033	TE00000387	CONTROLLER		1			
034	TE00000388	SCREW 3X10		4			
035	TE00000407	CABLE TIE		1			
036	TE00000090	POM FLAT WASHER 16		1			
037	TE00000018	ADAPTER SOCKET CAP		1			
038	TE00000389	ADAPTOR PLATE		1			

039	TE00000390	DC CHARGE BASE		1		
040	TE00000274	SHAKE HEAD-POM 1		1		
041	TE00000276	NUT M8		1	*	
041-1	TE00000450	NUT M8	O	1		
042	TE00000263	CLAMPING PARTS OF BATTERY T OUC		1		
043	TE00000247	TERMINAL		1		
044	TE00000391	BATTERY HOUSING		1		
045	TE00000394	LEAD UNIT		1		
046	TE00000392	LOWER COVER OF THE BASE		1		
047	TE00000401	RATING LABEL		1		
048	TE00000069	LOCKNUT M10		1		
049	TE00000370	CIRCLIP M3		1		
052	TE00000408	WASHER		1		
053	TE00000028	TAPPING SCREW 3X14		2		
054	TE00000028	TAPPING SCREW 3X14		3		
055	TE00000028	TAPPING SCREW 3X14		8		
056	TE00000028	TAPPING SCREW 3X14		4		
057	TE00000028	TAPPING SCREW 3X14		4		
058	TE00000028	TAPPING SCREW 3X14		4		
059	TE00000028	TAPPING SCREW 3X14		8		
A01	TE00000170	AC ADAPTOR		1		

Por favor declare No. de Partes cuando ordene.

Fecha de Impresión 21/01/2025