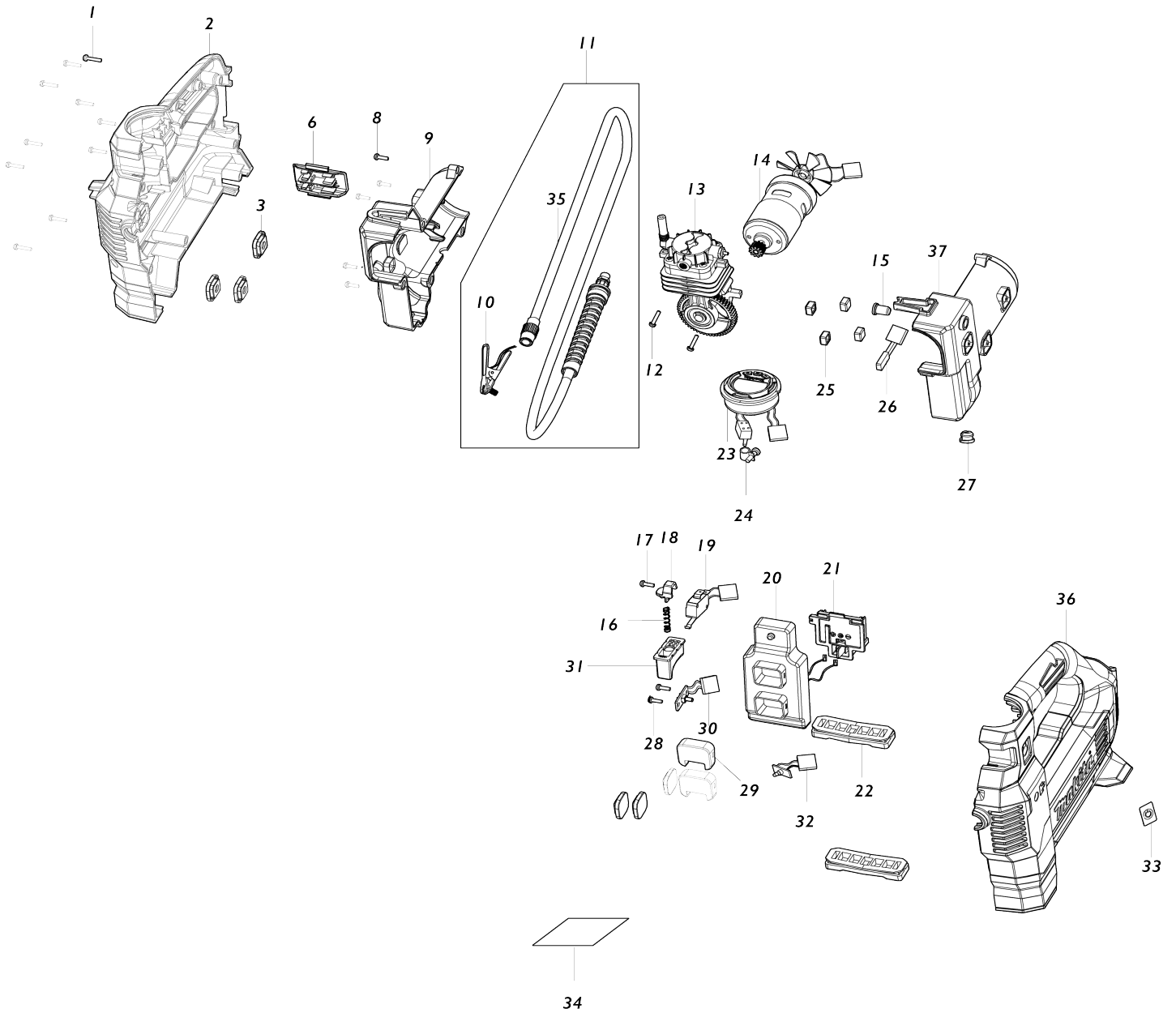


# Model No.DMP181 CORDLESS INFLATOR



Model No.DMP181 CORDLESS INFLATOR

Artículo No.	No. de Partes	Descripción	Intercambialidad	Cantidad	Nuevo/Viejo	Nota 1	Nota 2
001	TE0000028	TAPPING SCREW 3X14		10			
002	TE00000614	HOUSING SET		1			
002		INC. 33,36					
003	TE00000595	INNER PAD		6			
006	TE00000593	FIXED BRACKET		1			
008	TE00000029	TAPPING SCREW 3X10		5			
009	TE00000596	INNER HOUSING SET		1			
009		INC. 37					
010	TE00000597	BRITISH ADAPTER		1			
011	TE00000598	HOSE ASSEMBLY		1			
011		INC. 10					
012	TE00000624	SCREW 4X6		2			
013	TE00000625	CYLINDER COMPLETE		1			
014	TE00000615	MOTOR ASSEMBLY		1			
015	TE00000600	RELEASE VALVE BUTTON		1			
016	TE00000330	RESORTE P/DMP180		1			
017	TE00000029	TAPPING SCREW 3X10		1			
018	TE00000328	GATILLO DE RESORTE P/DMP180		1			
019	TE00000601	SWITCH		1	*		
019-1	TE00000601	SWITCH	O	1			
020	TE00000616	CONTROLLER		1			
021	TE00000424	TERMINAL DE LA BATERIA P/DM P180		1			
022	TE00000609	MAT		2			
023	TE00000617	DIGITAL DISPLAY		1			
024	TE00000352	ABRAZADERA P/DMP180		1			
025	TE00000606	PAD		4			
026	TE00000607	THERMAL PROTECTOR		1			
027	TE00000604	PLUG		1			
028	TE00000029	TAPPING SCREW 3X10		2			
029	TE00000602	PLATE		2			
030	TE00000608	POWER SWITCH		1			
031	TE00000485	SWITCH		1			
032	TE00000610	LED CIRCUIT		1	*		
032-1	TE00000837	LED CIRCUIT	O	1			
033	TE00000426	SWITCH LABEL		1			
034	TE00000618	NAME PLATE		1			
036	TE00000614	HOUSING SET		1			
036		INC. 2,33					
037	TE00000596	INNER HOUSING SET		1			
037		INC. 9					
038	TE00000850	SPRING		1			
A01	TE00000592	BALL ADAPTER		1			
A02	TE00000333	ADAPTADOR DE ANILLO DE NATACION		1			
A03	TE00000594	FRENCH ADAPTER		1			
F01	TE00000691	AIR CHUCK		1			
F02	TE00000796	AIR CHUCK		1			

