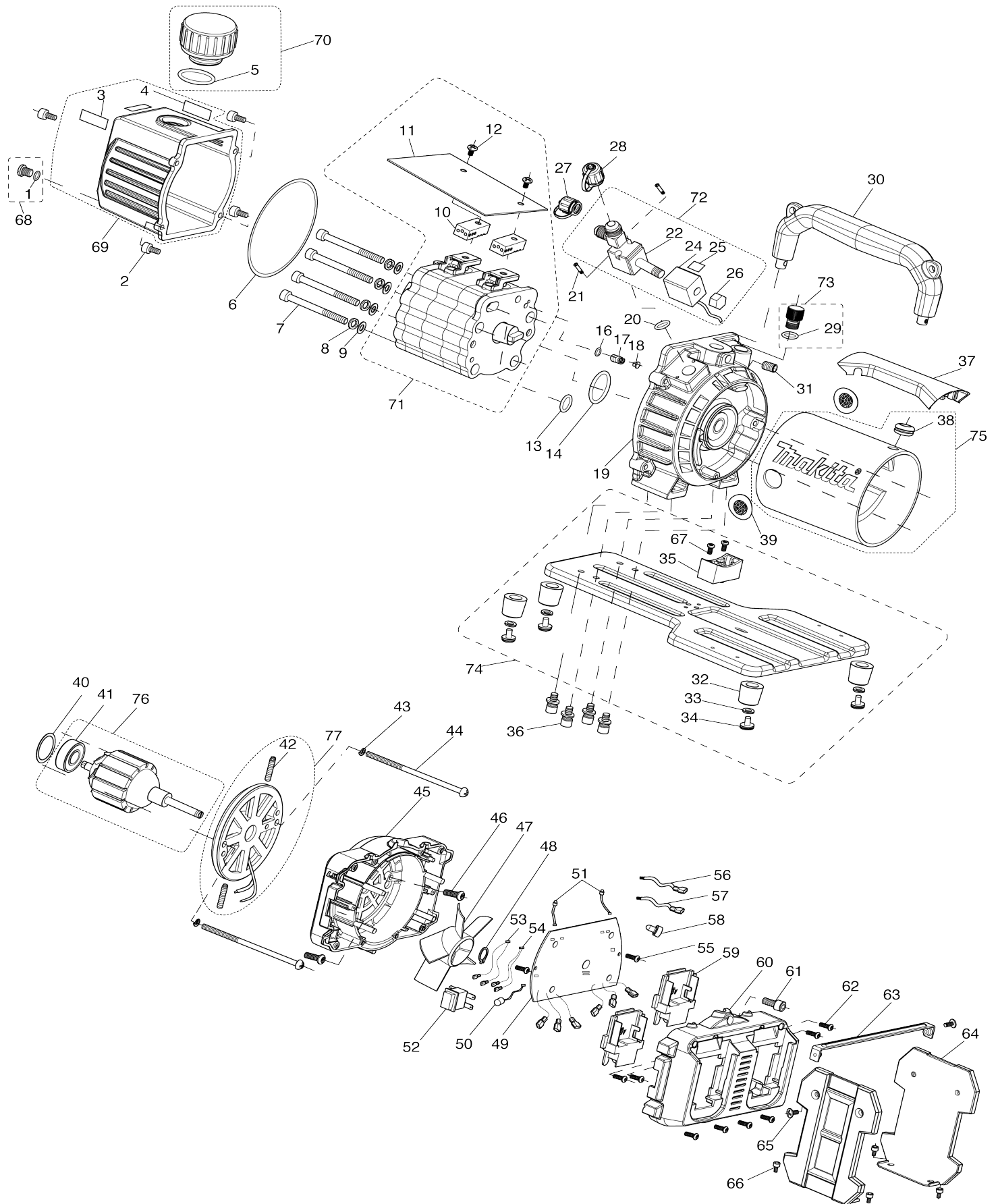


Model No.DVP181 CORDLESS VACUUM PUMP



Model No.DVP181 CORDLESS VACUUM PUMP

Artículo No.	No. de Partes	Descripción	Intercambialidad	Cantidad	Nuevo/Viejo	Nota 1	Nota 2
001	AS000VP010	EMPAQUE "O" 10X2.5 P/DVP180		1			
002	AS000VP011	TORNILLO		4			
003	AS00SS0537	CAUTION LABEL 18X18		1			
004	AS00SS0306	ETIQUETA DE PRECAUCION (ACEITE) P/DVP180		1			
005	AS000VP013	EMPAQUE "O" 26X2.2 P/DVP180		1			
006	AS000VP092	O-RING 120X3.1		1			
007	AS000VP093	HEX SOCKET HEAD BOLT M8X90		4			
008	AS000VP094	SPRING WASHER 8		4			
009	AS000VP095	FLAT WASHER 8		4			
010	AS000VP097	VALVE COVER		2			
011	AS000VP098	CAP BOARD		1			
012	AS000VP099	PAN HEAD SCREW M5X8		2			
013	AS000VP100	O-RING 12X1.6		1			
014	AS000VP101	O-RING 34.5X2		1			
016	AS000VP103	O-RING 13X2		1			
017	AS000VP104	SPRING 7X0.5X6		1			
018	AS000VP105	GAS BALLAST VALVE ELEMENT		1			
019	AS00VP106M	TRESTLE MA245		1			
020	AS000VP107	O-RING 15X2		1			
021	AS000VP173	PAN HEAD SCREW M3X25		2			
022	AS000VP109	SOLENOID VALVE ASSY		1			
024	AS000VP111	SOLENOID VALVE C1-18V COIL		1			
025	AS00SS0537	CAUTION LABEL 18X18		1			
026	AS000VP112	SOLENOID VALVE NUT		1			
027	AS000VP017	TAPA DE PUERTO DE ENTRADA (5/16") P/DVP180		1			
028	AS000VP113	INLET PORT CAP 4# (3/8SAE)		1			
029	AS000VP115	O-RING		1			
030	AS000VP117	HANDLE MA245		1			
031	AS000VP118	HEX SOCKET HEAD BOLT M8X8		1			
032	AS000VP121	RUBBER BLANKET 5#		4			
033	AS000VP122	FLAT WASHER		4			
034	AS000VP123	PAN HEAD SCREW M4X8		4			
035	AS000VP124	MOTOR SUPPORT		1			
036	AS000VP026	TORNILLO		4			
037	AS000VP125	WIRING COVER		1			
038	AS000VP126	RUBBER RING		1			
039	AS000VP020	TAPA LATERAL P/DVP180		2			
040	AS000VP128	BEARING WASHER		1			
041	AS000VP130	BEARING 6201		1			
042	AS000VP132	CARBON BRUSH SPRING DC18V		2			
043	AS000VP027	ARANDELA DE PRESION M5 P/DVP180		2			
044	AS000VP133	PAN HEAD SCREW M5X130		2			
045	AS000VP134	BATTERY HOLDER F		1			
046	AS000VP066	TONILLO HEXAGONAL M5X10 P/DVP180		2			
047	AS000VP135	FAN		1			

048	AS000VP136	CIRCLIP		1	*		
048-1	AS000VP175	CIRCLIP	<	1			
049	AS000VP137	CIRCUIT BOARD B8-18V		1	*		
049-1	AS000VP176	CIRCUIT BOARD	O	1	*		
049-2	AS000VP176	CIRCUIT BOARD	O	1			
049-2		INC.50-54					
050	AS000VP138	BUZZER		1			
051	AS000VP139	LED LAMP		2			
052	AS000VP140	SWITCH		1			
053	AS000VP141	WIRING ASSY L FOR SWITCH		1			
054	AS000VP142	WIRING ASSY S FOR SWITCH		1			
055	AS000VP035	TORNILLO		2			
056	AS000VP143	RED CONNECTING LINE		1			
057	AS000VP144	BLACK CONNECTING LINE		1			
058	AS000VP145	CLOSED END SPLICE		2			
059	643899-6	Terminal		2			
060	AS000VP146	BATTERY HOLDER		1			
061	AS000VP147	HEX SOCKET HEAD BOLT M5X10		1			
062	AS000VP035	TORNILLO		8			
063	AS000VP148	BATTERY GUARD CONNECTING R OD		1			
064	AS000VP149	BATTERY GUARD		2			
065	AS000VP123	PAN HEAD SCREW M4X8		2			
066	AS000VP174	HEX SOCKET HEAD BOLT M4X10		4			
067	AS000VP123	PAN HEAD SCREW M4X8		2			
068	AS00VP086M	OIL DRAIN PLUG ASSY		1			
068		INC. 1					
069	AS00VP091M	OIL TANK MA245 ASSY		1			
069		INC. 3,4					
070	AS000VP087	EXHAUST PORT ASSY		1			
070		INC. 5					
071	AS000VP096	PUMP HEAD ASSY		1			
071		INC. 10-12					
072	AS000VP108	SOLENOID VALVE ASSY		1			
072		INC. 22,24-24					
073	AS000VP114	GAS BALLAST ASSY		1			
073		INC. 29					
074	AS000VP119	BASE ASSY		1			
074		INC. 32-35,67					
075	AS00VP127M	MOTOR HOUSING ASSY		1			
075		INC. 38					
076	AS000VP129	ARMATURE ASSY		1			
076		INC. 41					
077	AS000VP131	MOTOR REAR COVER ASSY		1			
077		INC. 42					
078	AS000VP177	STRAINER		1			
A01	821822-3	Maletín de plástico		1			
A02	AS0Y06110K	ADAPTADOR P/DVP180		1			
A03	AS0VP083MK	VACUUM PUMP OIL		1			
C01	ASPK0103MK	SLEEVE BOX		1			

Por favor declare No. de Partes cuando ordene.

Fecha de Impresión 21/01/2025