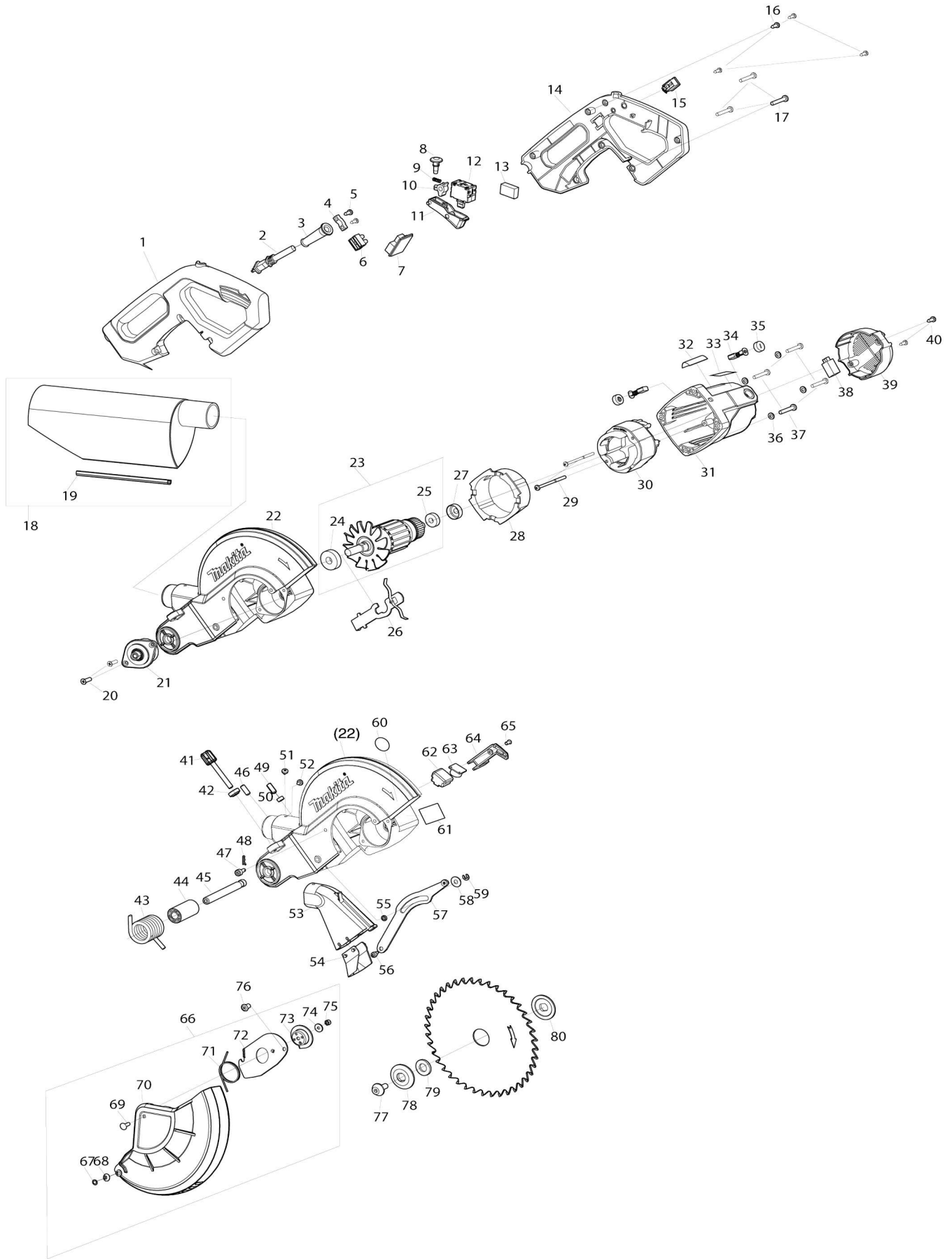
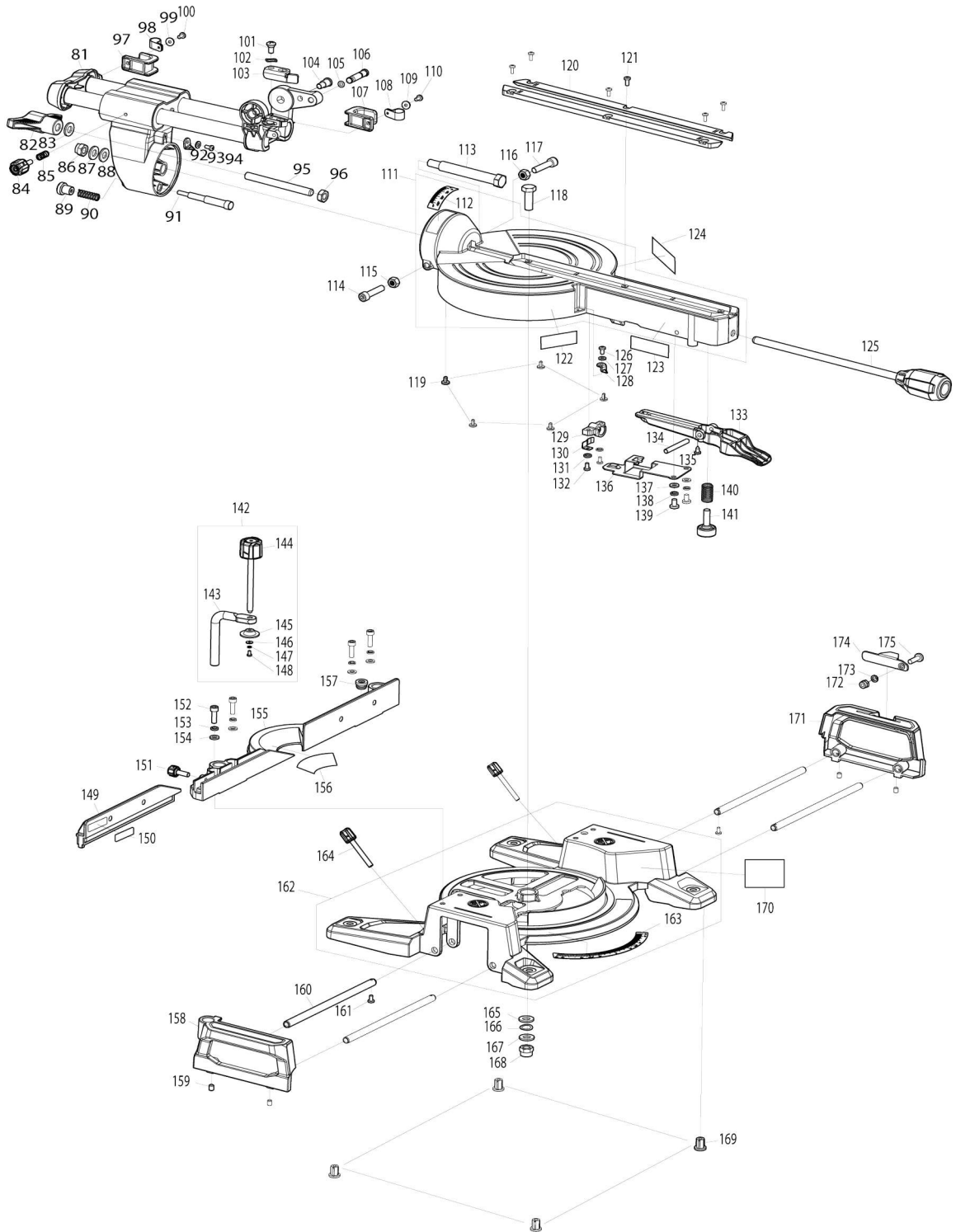


Model No.LS1110F 260MM SLIDE COMPOUND MITER SAW



Model No. LS1110F 260MM SLIDE COMPOUND MITER SAW



Model No.LS1110F 260MM SLIDE COMPOUND MITER SAW

Artículo No.	No. de Partes	Descripción	Intercambialidad	Cantidad	Nuevo/Viejo	Nota 1	Nota 2
001	JM00000648	HANDLE LEFT		1			
002	JM23000163	CABLE DE ALIMENTACIÓN P/LS0815FL		1			
003	JM00000585	CORD GUARD L		1			
004	JM00000584	CORD CLAMP		1			
005	JM00000548	TAPPING SCREW ST4.2X13		2			
006	JM23100171	TERMINAL P/LS0815FL		1			
007	JM00000574	PW CIRCUIT FOR LED LAMP		1			
008	JM23100177	LLAVE DE INTERRUPTOR DE SISTEMA DE FRENOS P/LS1018L		1			
009	JM00000582	COMPRESSION SPRING		1			
010	JM00000581	LOCK OFF LINK ROCKER		1			
011	JM00000575	SWITCH LEVER		1			
012	JM00000577	SWITCH		1			
014	JM00000647	HANDLE RIGHT		1			
015	JM00000579	LAMP SWITCH		1			
016	JM00000548	TAPPING SCREW ST4.2X13		4			
017	JM00000551	PAN HEAD SCREW M5X30		3			
018	JM00000624	DUST BAG ASSY		1			
018		INC. 19					
019	JM00000534	DUST BAG CLAMP		1			
020	JM27000317	TORNILLO M5X16		2			
021	JM00000643	OUTPUT SHAFT ASSEMBLY		1			
022	JM00000623	UPPER BLADE GUARD COMP		1	*		
022-1	JM00000699	UPPER BLADE GUARD COMP	X	1			
023	JM00000646	ARMATURE ASSY (120-127V)		1			
023		INC. 24,25					
024	JM23500137	BALERO 6201 P/LS0815FL		1			
025	JM23200032	SOPORTE 6001 PARA LS1018L		1			
026	JM00000644	SPINDLE LOCK LEVER COMPLETE		1			
027	JM23100172	ANILLO DE GOMA ABSORVEDOR P/LS1018L		1			
028	JM00000625	BUFFLE PLATE		1			
029	JM00000660	SELF TAPPING SCREW ST5X60		2			
030	JM00000628	FIELD 120-127V		1			
031	JM00000629	MOTOR HOUSING ASSY		1			
032	JM00000639	NAME PLATE MX		1			
034	JM23000123	JUEGO DE ESCOBILLA DE CARBON CB-500 P/MLS100		1			
035	JM23100182	TORNILLO P/LS1018L		2			
036	JM23100007	ARANDELA PLANA 8 P/LS0815FL		4			
037	JM00000551	PAN HEAD SCREW M5X30		4			
038	JM00000440	SOFT-START PCB UNIT		1			
039	JM00000661	MOTOR END COVER		1			
040	JM00000548	TAPPING SCREW ST4.2X13		2			
041	JM00000444	KNOB BOLT M6X46		1			
042	JM00000536	KNURLED NUT M6		1			
043	JM00000611	TORSION SPRING 38		1			
044	JM00000610	SPRING BUSH		1			

045	JM00000609	PIVOT SHAFT 12X119		1		
046	JM00000537	HEX SOCKET SET SCREW M6X16		1		
047	JM00000532	HEX SOCKET HEAD BOLT M6X18		1		
048	JM00000531	R-PIN 6		1		
049	JM00000538	SET SCREW M6X18		1		
050	JM23100035	ANILLO P/LS0815FL		1		
051	JM00000460	TAPPING SCREW ST4.2X9.5		1		
052	JM00000460	TAPPING SCREW ST4.2X9.5		1		
053	JM00000618	DUST PORT		1		
054	JM00000619	DUST CHUTE PLATE		1		
055	JM23100098	MANGA DE ENLACE P/LS0815FL		1		
056	JM00000495	STEPPED H.S.H.BOLT M6X10		1		
057	JM00000621	LINK PLATE COMP		1		
058	JM23100071	ARANDELA 6 P/LS0815FL		1		
059	JM00000525	STOP RING E-5		1		
060	JM00000589	CAUTION LABEL		1		
061	JM00000590	CAUTION LABEL		1		
062	JM00000540	LED LAMP BOX		1		
063	JM00000541	LED LAMP COMP		1		
064	JM00000622	LED WIRE COVER		1		
065	JM23100065	TORNILLO PARA LS1017L		1		
066	JM00000613	LOWER BLADE GUARD ASSY		1		
066		INC. 67-75				
067	JM00000503	PUSH NUT 5		1		
068	JM00000504	GUARD WHEEL		1		
069	JM00000614	SQUARE NECK BOLT M5X16		1		
070	JM00000615	LOWER BLADE GUARD		1		
071	JM00000507	TORSION SPRING 40		1		
072	JM00000616	GUARD FIX PLATE		1		
073	JM00000617	BOWL PLATE		1		
074	JM00000510	FLAT WASHER 5L		1		
075	JM23100141	TUERCA DE BLOQUEO M5 P/LS0815FL		1		
076	JM00000530	STEPPED TRASS HEAD BOLT M6X10		1		
077	JM00000620	HEX SOCKET HEAD BOLT M8X20 LH		1		
078	JM23100124	BRIDA INTERNA P/LS1017L		1		
080	JM23100124	BRIDA INTERNA P/LS1017L		1		
081	JM00000612	SLIDING ARM ASSY		1		
082	JM00000477	WING NUT M10		1		
083	JM23100010	ARANDELA PLANA 10 P/LS0815FL		1		
084	JM00000478	KNOB BOLT M6X20		1		
085	JM00000479	COMPRESSION SPRING 9X18		1		
086	JM23100009	TUERCA DE BLOQUEO M10 P/LS0815FL		1		
087	JM23100010	ARANDELA PLANA 10 P/LS0815FL		1		
088	JM23100010	ARANDELA PLANA 10 P/LS0815FL		1		
089	JM00000480	KNOB NUT M5		1		
090	JM00000481	COMPRESSION SPRING 10X32		1		

091	JM00000608	BEVEL STEP STOPPER BOLT M5X18	1		
092	JM00000482	BEVEL SCALE POINTER	1		
093	JM23100016	ARANDELA PLANA 4 P/LS0815FL	1		
094	JM23100065	TORNILLO PARA LS1017L	1		
095	JM00000607	HEX SOCKET SCREW ROD M10X120	1		
096	JM23000015	CONTRATUERCA M10	1		
097	JM00000501	CORD REEL HOOK	1		
098	JM00000500	CORD CLIP	1		
099	JM00000499	BIG FLAT WASHER 5	1		
100	JM00000498	PAN HEAD SCREW M5X16	1		
101	JM00000517	STEPPED PAN HEAD SCREW M6X10	1		
102	JM23100094	ARANDELA DE PRESIÓN P/LS0815FL	1		
103	JM00000516	CUTTING DEPTH ADJUSTABLE PLATE	1		
104	JM00000515	H.S.H. SPECIAL BOLT M10X10	1		
105	JM23100150	SELLO	1		
106	JM00000496	LOCK PIN	1		
107	JM00000501	CORD REEL HOOK	1		
108	JM00000500	CORD CLIP	1		
109	JM00000499	BIG FLAT WASHER 5	1		
110	JM00000498	PAN HEAD SCREW M5X16	1		
111	JM00000605	TURN TABLE COMPLETE	1		
111		INC. 112			
112	JM00000606	SUPPORT ARM SCALE LABEL	1		
113	JM00000467	CONNECTION SHAFT BOLT M10X20	1		
114	JM00000603	HEX SOCKET HEAD BOLT M8X40	1		
115	JM23000028	TUERCA	1		
116	JM23000028	TUERCA	1		
117	JM00000603	HEX SOCKET HEAD BOLT M8X40	1		
118	JM00000468	HEX BOLT M10X45	1		
119	JM00000453	SLIDING FOOT	5		
120	JM00000476	KERF BOARD	2		
121	JM23100033	PERNO LISO	6		
122	JM2318A067	CAUTION LABEL	1		
123	JM2318A074	CAUTION LABEL	1		
124	JM23180069	CAUTION LABEL	1		
125	JM00000463	GRIP BOLT M10X244	1		
126	JM23100065	TORNILLO PARA LS1017L	1		
127	JM23100016	ARANDELA PLANA 4 P/LS0815FL	1		
128	JM00000465	TURN BASE POINTER	1		
129	JM00000454	BACK SUPPORT	1		
130	JM00000455	LOCK PLATE	1		
131	JM23100015	SPRING WASHER 4 P/LS1017 /LS1018	2		
132	JM00000456	PAN HEAD SCREW M4X16	2		
133	JM00000459	POSITION LOCK LEVER	1		
134	JM00000464	PIN 6X50	1		
135	JM00000460	TAPPING SCREW ST4.2X9.5	1		
136	JM00000457	POSITION SPRING PLATE	1		

137	JM23100041	ARANDELA P/LS1017L		2		
138	JM23100151	ARANDELA DE PRESIÓN 6 P/LS0815FL		2		
139	JM00000604	PAN HEAD SCREW M6X12		2		
140	JM00000461	COMPRESSION SPRING 14.5X25		1		
141	JM00000462	FOOT BOLT M8X23		1		
142	JM00000432	VERTICAL VISE SET		1		
142		INC. 143-148				
143	JM00000474	VISE ARM		1		
144	JM00000475	KNOB BOLT M10X128		1		
145	JM00000473	PRESSURE PLATE		1		
146	JM00000472	FLAT WASHER 4 XL		1		
147	JM23100015	SPRING WASHER 4 P/LS1017 /LS1018		1		
148	JM23100033	PERNO LISO		1		
149	JM00000602	SUB FENCE		1		
150	JM23580063	CAUTION LABEL		1		
151	JM00000449	KNOB BOLT M6X18		1		
152	JM00000450	HEX SOCKET HEAD BOLT M8X20		4		
153	JM23100061	ARANDELA DE PRESIÓN 8 P/LS0815FL		4		
154	JM23100060	ARANDELA PLANA 8 P/LS0815FL		4		
155	JM00000601	RIP FENCE		1		
156	JM23580067	CAUTION LABEL		1		
157	JM00000446	WRENCH HOLDER SLEEVE		1		
158	JM00000433	LEFT EXTENSION TABLE		1		
159	JM23100087	LOCK SCREW M6X8		4		
160	JM00000434	EXTENSION PIPE 10X210		4		
161	JM00000435	PAN HEAD SCREW M4X8		2		
162	JM00000600	BASE COMP		1		
162		INC. 163				
163	JM00000439	MITER SCALE LABEL		1		
164	JM00000444	KNOB BOLT M6X46		2		
165	JM23100010	ARANDELA PLANA 10 P/LS0815FL		1		
166	JM00000437	WAVE WASHER 10		1		
167	JM23100010	ARANDELA PLANA 10 P/LS0815FL		1		
168	JM23100009	TUERCA DE BLOQUEO M10 P/LS0815FL		1		
169	JM00000436	RUBBER FOOT		4		
170	JM23180073	CAUTION LABEL		1		
171	JM00000442	RIGHT EXTENSION TABLE		1		
172	JM00000441	HEX. LOCK NUT M6		1		
173	JM23100041	ARANDELA P/LS1017L		1		
174	JM00000443	SET PLATE		1		
175	JM00000074	PAN HEAD SCREW M6X20		1		
A01	D-77316	TCT SAW 255X40T		1		
A02	JM00000445	UNI.HEX KEY WRENCH 6MM & PH2		1		

Por favor declare No. de Partes cuando ordene.

Fecha de Impresión 21/01/2025