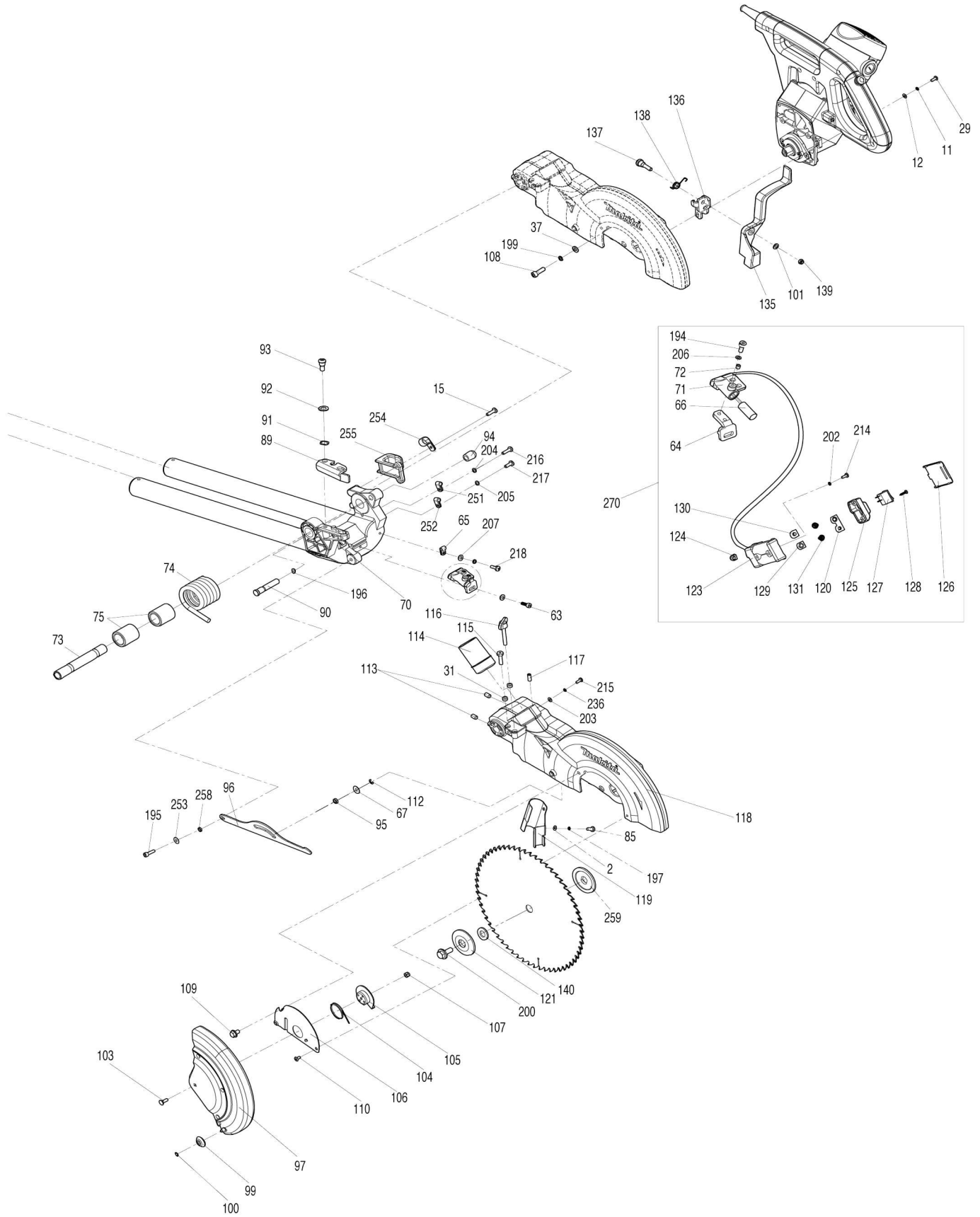
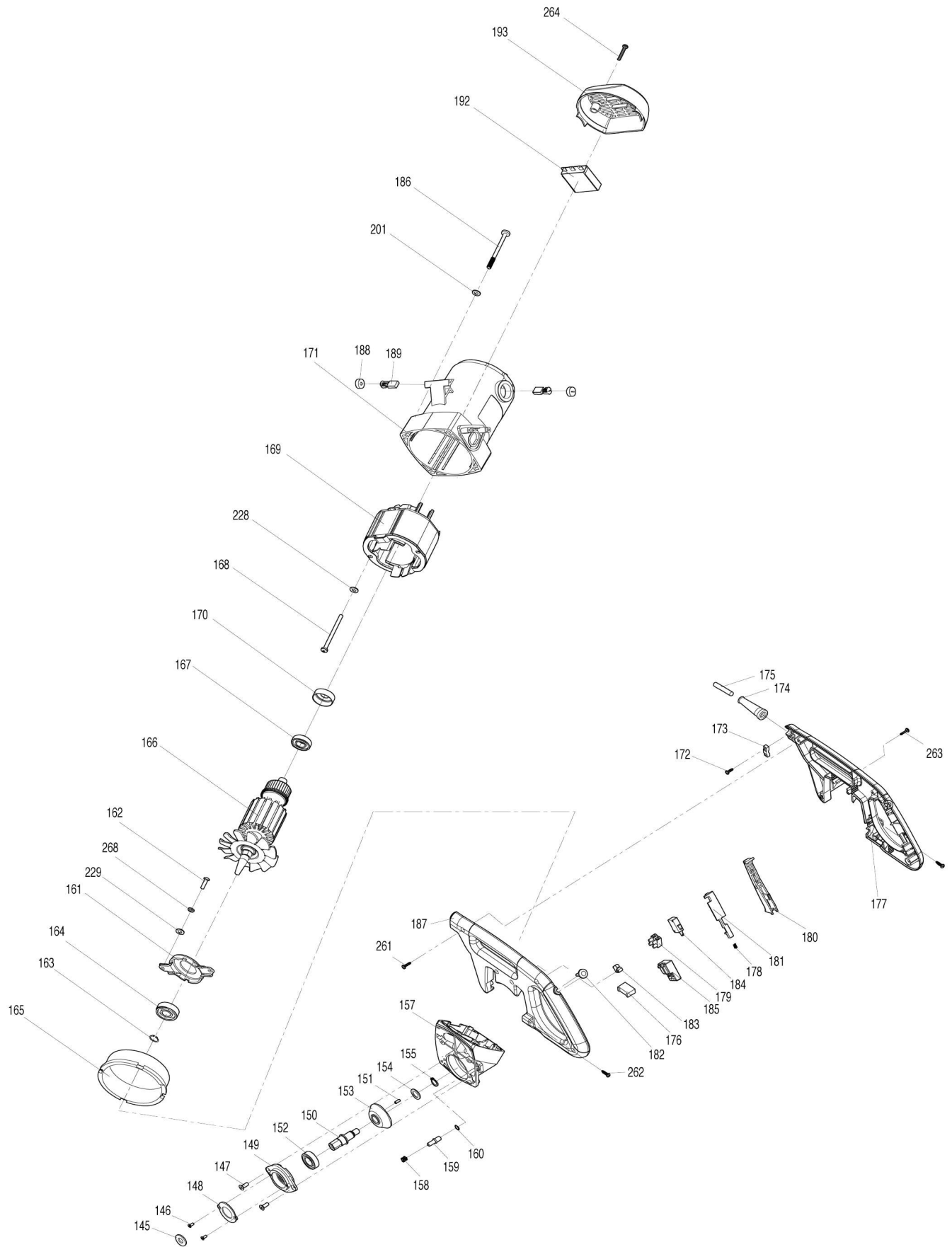


Model No.LS1018L SIERRA DE INGLETE DOBLE BISEL



Model No.LS1018L SIERRA DE INGLETE DOBLE BISEL



Model No.LS1018L SIERRA DE INGLETE DOBLE BISEL

Artículo No.	No. de Partes	Descripción	Intercambibilidad	Cantidad	Nuevo/Viejo	Nota 1	Nota 2
001	JM23100006	TORNILLO M5X20 P/LS0815FL		2			
002	JM23100007	ARANDELA PLANA 8 P/LS0815FL		2			
003	JM23100008	PAD P/LS1018		4			
004	JM23100009	TUERCA DE BLOQUEO M10 P/LS0815FL		1			
005	JM23100010	ARANDELA PLANA 10 P/LS0815FL		2			
006	JM23100300	BASE COMPELTA P/LS1018L		1			
C10	JM2708A060	CAUTION LABEL		2	*		
C20	JM23100012	MITER SCALE LABEL		1	*		
006		INC. 7			*		
006		INC. 289			*		
006		INC. 007, 289					
007	JM23100012	MITER SCALE LABEL		1	*		
007-1	JM23100012	MITER SCALE LABEL		1			
009	JM23100013	PERILLA P/LS0815FL		2	*		
009-1	JM00000074	PAN HEAD SCREW M6X20	X	2	*		
009-2	JM23100013	PERILLA P/LS0815FL	X	2			
010	JM23100014	PERNO CRUZ M4x5 P/LS1017 /LS1018		2			
013	JM23100017	PLATO DE FRICCION PARA LS1017L		2			
014	JM23100018	PLACA DE BLOQUEO A P/LS0815FL		1			
015	JM23100019	TORNILLO M4X18 P/LS0815FL		2	*		
015-1	JM23100019	TORNILLO M4X18 P/LS0815FL	O	1			
016	JM23100020	PLACA DE BLOQUEO B P/LS0815FL		1			
017	JM23100021	RESORTE DE SEGURIDAD P/LS1017L		1			
018	JM23100022	PERNO LISO		1			
019	JM23100023	PALANCA DE SEGURIDAD P/LS1017L		1			
020	JM23100024	EJE DE BLOQUEO B P/LS1017L		1			
021	JM23100025	SOPORTE DEL EJE DE BLOQUEO P/LS0815FL		1			
022	JM23100026	LOCK SHAFT A P/LS1017 /LS1018		1			
023	JM23100027	PERILLA DE LA MORDAZA P/LS0815FL		1			
024	JM23200101	WORKING TABLE COMPLETE		1	*		
C10	JM23200004	BEVEL SCALE		1	*		
C20	JM23100038	ELASTIC PIN 4X20		1	*		
C30	JM23100039	LOCKING ROD		1	*		
C40	JM23100009	TUERCA DE BLOQUEO M10 P/LS0815FL		1	*		
C50	JM23180072	CAUTION LABEL		1	*		
024		INC. 32,34,35			*		
024-1	JM23200100	TABLA DE TRABAJO COMPLETA P/MLT100	X	1			
C10	JM23200004	BEVEL SCALE		1	*		
024-1		INC. 292-295			*		

024-1		INC. 292-295, 308				
025	JM23100029	TARJETA GUIA P/LS1017		2	*	
025-1	JM00000430	KERF BOARD	O	2		
026	JM23100030	MARCADOR DE INGLETE P/LS0815FL		1		
027	JM23100031	CROSS HEAD SCREW M5X15		2		
028	JM23100032	PIVOT SHAFT		1		
030	JM23100034	TORNILLO HEXAGONAL M6X28 P/LS0815FL		1		
031	JM23100035	ANILLO P/LS0815FL		2	*	
031-1	JM23100035	ANILLO P/LS0815FL	O	1		
032	JM23200004	BEVEL SCALE		1	*	
033	JM23100037	FRICITION RING		1		
034	JM23100038	ELASTIC PIN 4X20		1	*	
035	JM23100039	LOCKING ROD		1	*	
036	JM23100040	H.S.BOLT M6X20		3		
037	JM23100041	ARANDELA P/LS1017L		4		
038	JM23200005	45DEGREE LIMIT BRACKET		1		
039	JM23100043	RETAINING RING 10		1	*	
039-1	JM27100102	E RING 12 FOR 2712	X	1		
040	JM23100044	FLAT WASHER 12X20X1		1		
041	JM23100045	ANGLE LIMIT SHAFT		1	*	
041-1	JM23100045	ANGLE LIMIT SHAFT		1		
042	JM23100046	90DEGREE BLOCK SPRING		1		
043	JM23100047	PERILLA LIMITADORA P/LS1017L		1		
044	JM23100048	PUNTERO P/LS0815FL		1		
045	JM23100049	RESORTE DE PRESIÓN DE INGLETE P/LS0815FL		1		
046	JM23100330	SOPORTE DEL BRAZO COMPLETO P/LS1017L		1	*	
C10	JM23100045	ANGLE LIMIT SHAFT		1	*	
C20	JM23100081	BUFFER		1	*	
C30	JM23100085	LINEAR BEARING		1	*	
C40	JM23100087	LOCK SCREW M6X8		1	*	
046		INC. 77,79-81,83,243-246,256			*	
046		INC. 79-80,243-246			*	
046		INC. 79,80,243-246,296-303			*	
046-1	JM00000415	SUPPORT ARM COMPLETE	O	1		
046-1		INC. 79,80,243-246,296-303				
047	JM23100051	PERILLA LIMITADA P/LS0815FL		1		
048	JM23100052	SEGURO BASE P/LS0815FL		1		
049	JM23100053	PLATO P/LS0815FL		1		
050	JM23100054	COJINETE DE SUPERFICIE P/LS0815FL		1		
051	JM23100055	ARANDELA GRANDE PLANA 10X26X2.5 P/LS0815FL		2		
052	JM23100056	SLIDING BRACKET COVER P/LS1018		1		
053	JM23100057	TUERCA HEXAGONAL P/LS1018L		1		
054	JM23100058	BISEL DE BLOQUEO MANUAL P/LS1018L		1		
055	JM23100059	GUIA DE CORTE P/LS1017L		1	*	
055-1	JM23200037	RIP FENCE	O	1		
056	JM23100060	ARANDELA PLANA 8 P/LS0815FL		4		

057	JM23100061	ARANDELA DE PRESIÓN 8 P/LS0815FL		4		
058	JM23100062	TORNILLO HEXAGONAL M8X30 P/LS0815FL		4		
059	JM23100063	LLAVE P/LS1018L		1		
060	JM23100322	SUB FENCE COMPLETE		1	*	
C10	JM23180070	CAUTION LABEL		1	*	
060-1	JM23210003	SUB FENCE COMPLETE	>	1		
C10	JM23180070	CAUTION LABEL		1	*	
060-1		INC. 311, 312				
061	JM23100065	TORNILLO PARA LS1017L		2		
062	JM23100066	PERNO MARIPOSA M6x20 PARA LS1017L y LS1018L		1		
063	JM23100067	TORNILLO HEXAGONAL M4X12 P/LS0815FL		1	*	
063-1	JM23100146	H.S.BOLT M4X10	X	1		
064	JM23100068	LASER MOVING FIX PLATE		1		
065	JM23100069	LASER CORD CLAMP		1		
066	JM23100070	LASER P/LS1018L		1		
067	JM23100071	ARANDELA 6 P/LS0815FL		1		
068	JM23100072	ABRAZADERA DE CABLE PARA LS1017L y LS1018L		1	*	
068-1	JM23100194	CAJA DE CAMPO P/LS1017L	<	1		
069	JM23100073	SOPORTE PARA ENROLLAR CABLE PARA LS1017L y LS1018L		1		
070	JM23100341	UP BLADE GUARD BRACKETCOMPLETE		1	*	
070		INC. 76,141			*	
070-1	JM23100343	UP BLADE GUARD BRACKET COMPLETE	O	1		
C10	JM23100145	ELASTIC PIN 5X30		2	*	
070-1		INC. 76,141			*	
071	JM23100075	LASER BASE		1		
072	JM23100076	H.S.SCREW M4X10		1	*	
072-1	JM23300038	PERNO LISO	X	1		
073	JM23100077	SHAFT DE CONEXION PARA LS1018L		1		
074	JM23100078	RESORTE DE TORSION HELICOIDAL		1		
075	JM23100079	TUBO DE UBICACION PARA LS1017L - LS1018L		2		
076	JM23100080	SLIDING BAR P/LS1018L		2	*	
077	JM23100081	BUFFER		1	*	
078	JM23100082	SEPARADOR DEL RODAMIENTO P/LS1017L		1		
079	JM23100083	SOPORTE P/LS1017L		2	*	
079-1	JM23100083	SOPORTE P/LS1017L	O	1		
080	JM23100084	ANILLO CUBRE POLVO P/LS1017L		1	*	
080-1	JM23100083	SOPORTE P/LS1017L	X	1		
081	JM23100085	LINEAR BEARING		3	*	
082	JM23100086	PERILLA DESLIZANTE DE AJUSTE P/LS1017L		1		
083	JM23100087	LOCK SCREW M6X8		2	*	
084	JM23100088	RESORTE DE PRESION		1		
085	JM23100089	CROSS HEAD SCREW M5X12		2		

086	JM23100090	TAPA CORREDERA TRASERA PAR A LS1018L		1		
087	JM23100091	CLIP DE LLAVE P/LS0815FL		1		
089	JM23100092	CUTTING DEPTH ADJUSTABLE PL ATE		1		
090	JM23100093	PIN C		1	*	
090-1	JM23100193	PERNO C P/LS1017L	O	1		
091	JM23100094	ARANDELA DE PRESIÓN P/LS081 5FL		1		
092	JM23100095	FLAT WASHER 8X14X1		1		
093	JM23100096	PERNO DE PLACA AJUSTABLE P/L S0815FL		1		
094	JM23100097	TAPA DEL PERNO P/LS0815FL		1		
095	JM23100098	MANGA DE ENLACE P/LS0815FL		1		
096	JM23100099	ENLACE P/LS1018L		1		
097	JM23100350	GUARDA DE LA CUCHILLA P/LS10 17		1	*	
C10	JM23100101	REMACHE DE GUARDAP/LS1018L		3	*	
C20	JM23100105	PLACA PROTECTOR HOJA P/LS10 18L		1	*	
C30	JM23100104	FLAT WASHER 5		3	*	
097		INC. 98,101,102			*	
097		INC. 101			*	
097-1	JM23210008	LOWER BLADE GUARD COMPLET E	X	1		
098	JM23100101	REMACHE DE GUARDAP/LS1018L		3	*	
099	JM23100102	RUEDA DE PROTECCIÓN P/LS051 8FL		1		
100	JM23100103	ANILLO DE BLOQUEO DE RUEDA P/LS0815FL		1		
102	JM23100105	PLACA PROTECTOR HOJA P/LS10 18L		1	*	
103	JM23100106	TORNILLO DE ESQUINA P/LS101 8L		1		
104	JM23100107	RESORTE DEFENSA P/LS1018L		1		
105	JM23100108	PLACA PARA PLATILLO P/LS1018 L		1		
106	JM23100109	PLACA GUARDA FIJA P/LS1018L		1		
107	JM23100110	TUERCA M6 P/LS1018L		1		
108	JM23200006	H.S.BOLT M6X22		4		
109	JM23100112	HEX BOLT FOR GUARD		1		
110	JM23100113	TORNILLO CRUZ PARA GUARDA P/LS0815FL		1		
111	JM23100114	LINK PIN		1	*	
112	JM23100115	ANILLO DE RETENCIÓN 5 P/LS08 15FL		1		
113	JM23100116	PERNO M6x12 P/LS1018L /LS101 7L		2		
114	JM23100117	CODO PARA LS1017L		1		
115	JM23100118	TORNILLO PARA LS1017L		1		
116	JM23100119	PERILLA P/LS0815FL		1		
117	JM23100120	H.S.SCREW M6X15		1		
118	JM23100362	UP BLADE GUARD COMPLETE		1	*	
118		INC. 143			*	
118-1	JM23200143	UP BLADE GUARD COMPLETE	O	1	*	
118-1		INC. 143			*	

118-2	JM23200148	UP BLADE GUARD COMPLETE	O	1	*		
C20	JM23100114	LINK PIN		1	*		
C30	JM23100147	BUFFER		1	*		
118-2		INC. 143			*		
118-3	JM23200147	UP BLADE GUARD COMPLETE	>	1			
C20	JM23100114	LINK PIN		1	*		
C30	JM23100147	BUFFER		1	*		
118-3		INC. 305,306					
119	JM23100122	DUST GUIDE PLATE		1			
120	JM23100123	COPPER CONNECTION PLATE		1			
121	JM23100124	BRIDA INTERNA P/LS1017L		1			
123	JM23100125	BATTERY BOX		1			
124	JM23100126	LASER CORD TUBE		1			
125	JM23100127	LASER SWITH COVER P/LS1017L / LS1018L		1			
126	JM23100128	TAPA PILAS PARA LS1017L		1			
127	JM23100129	LASER SWITCH PARA LS1017L / L S1018L		1			
128	JM23100130	SELF-TAPPING SCREW 2.9X12		2			
129	JM23100131	ANODE COPPER SHEET		1			
130	JM23100132	HOJA CATODO DE COBRE PARA L S1017L		1			
131	JM23100133	RESORTE DE LA CAJA DE BATERIA S PARA LS1017L		2			
132	JM23200007	PASADOR PARA LS1018L		2			
133	JM23200112	RIGHT SUB FENCE COMPLETE		1	*		
C10	JM23280058	CAUTION LABEL		1	*		
133-1	JM00000077	RIGHT SUB FENCE COMPLETE	X	1	*		
C10	JM23280058	CAUTION LABEL		1	*		
133-2	JM23200008	RIGHT SUB FENCE	X	1			
134	JM23200009	PERNO ALLEN M6x10 PARA LS10 18L		2			
141	JM23100145	ELASTIC PIN 5X30		2	*		
142	JM23100154	BIG FLAT WASHER 10		1			
143	JM23100147	BUFFER		1	*		
145	JM23200012	OUTPUT SHAFT RING 15.88		1			
146	JM23200013	TUERCA AVELLANADA M4x10 PA RA MLS100		2			
147	JM23200014	COUNTERSUNK HEAD BOLT M6X 15		2			
148	JM23200015	PLACA DE SOPORTE DE PRENSA P/LS1018L		1			
149	JM23200016	CUBRE SOPORTE PARA LS1018L		1			
150	JM23200017	FLECHA P/LS1018L		1			
151	JM23200018	LLAVE 4x10 PARA LS1018L		1			
152	JM23200019	BEARING 6003		1	*		
152-1	JM23200031	RODAMIENTO 6003 P/LS1018	X	1	*		
152-2	JM23200019	BEARING 6003	O	1			
153	JM23200020	ENGRANAJE CONICOHELICOIDAL P/LS1018L		1			
154	JM23200021	SHAFT WASHER		1			
155	JM23200022	ANILLO ELASTICO PARA LS1018		1			
156	JM23200023	OIL BUSH		1	*		
157	JM23200130	CAJA DE ENGRANAJE COMPLETA P/LS1018L		1			

C10	JM23200023	OIL BUSH		1	*		
157		INC. 156			*		
158	JM23200025	GEAR LOCK SPRING		1			
159	JM23200026	GEAR LOCK PIN		1			
160	JM23200027	RETAINING RING 10.5X1		1			
161	JM23200028	TAPA DE SALIDA PARA LS1018L		1			
162	JM23200029	PERNO M5x18 P/LS1810L		2			
163	JM23200030	ANILLO DE RETENCION 16 PARA LS1018L		1			
164	JM23200031	RODAMIENTO 6003 P/LS1018		1	*		
164-1	JM23200019	BEARING 6003	O	1			
165	JM23100168	ANILLO DE GOMA DEFLECTOR P/LS1018L		1			
166	JM23200003	ARMADURA 115V P/LS1018L		1			
166		INC. 161,164,167					
167	JM23200032	SOPORTE 6001 PARA LS1018L		1			
168	JM23100170	TORNILLO AUTORROSCANTE M5x70 P/LS1018L		2			
169	JM23100003	CAMPO P/LS1017L		1			
170	JM23100172	ANILLO DE GOMA ABSORVEDOR P/LS1018L		1			
171	JM23200122	MOTOR HOUSE COMPLETE		1	*		
C10	JM23180068	CAUTION LABEL		1	*		
C20	JM23180069	CAUTION LABEL		1	*		
C30	JM23280021	NAME PLATE		1	*		
C40	JM23100184	CAJA DE CARBON P/LS1018L		2	*		
C50	JM23100185	H.S.SCREW M5X8		2	*		
171		INC. 190,191			*		
171-1	JM23200121	MOTOR HOUSE COMPLETE	>	1			
C10	JM23180068	CAUTION LABEL		1	*		
C20	JM23180069	CAUTION LABEL		1	*		
C30	JM23280021	NAME PLATE		1	*		
C40	JM23100184	CAJA DE CARBON P/LS1018L		2	*		
C50	JM23100185	H.S.SCREW M5X8		2	*		
172	JM23100167	TORNILLO M4X16 P/LS0815FL		2	*		
172-1	JM23000106	PERNO T4.2X12	X	2			
173	JM23100166	ABRAZADERA DEL CABLE P/LS0815FL		1			
174	JM23100165	TUBO DE PROTECCION P/LS1018L		1	*		
174-1	JM23100195	TUBO DE PROTECCIÓN P/LS0815FL	<	1			
175	JM23000163	CABLE DE ALIMENTACIÓN P/LS0815FL		1			
176	JM23100169	CAPACITOR P/LS0815FL		1	*		
177	JM23200034	MANGO DERECHO P/LS1018L		1			
178	JM23100176	RESORTE DEL INTERRUPTOR P/LS1016L		1			
179	JM23100171	TERMINAL P/LS0815FL		1			
180	JM23100174	INTERRUPTOR DE LA EMPUÑADURA P/LS1017L		1			
181	JM23100175	PLACA DEL INTERRUPTOR P/LS1017L		1			
182	JM23100177	LLAVE DE INTERRUPTOR DE SISTEMA DE FRENOS P/LS1018L		1			

183	JM23100173	SOPORTE DE BLOQUEO DE INTERRUPTOR P/LS0815FL		1		
184	JM23100178	INTERRUPTOR DEL SISTEMA DE FRENO P/LS1016L		1		
185	JM23100179	INTERRUPTOR DE ENCENDIDO		1		
186	JM23200035	CROSS HEAD SCREW M6X50		4		
187	JM23200036	MANGO IZQUIERDO PARA LS1018L		1		
188	JM23100182	TORNILLO P/LS1018L		2		
189	JM23100183	CARBON P/LS1018L		2	*	
189-1	JM23000123	JUEGO DE ESCOBILLA DE CARBON CB-500 P/MLS100	O	2	*	
189-2	JM23000123	JUEGO DE ESCOBILLA DE CARBON CB-500 P/MLS100	O	1		
190	JM23100184	CAJA DE CARBON P/LS1018L		2	*	
191	JM23100185	H.S.SCREW M5X8		2	*	
192	JM23100186	ARRANCADORP/LS1018L		1	*	
192-1	JM23100192	CONTROLADOR P/LS1017L	X	1		
193	JM23100188	TAPA TRASERA DE MOTOR PARA LS1017L - LS1018L		1		
194	JM23100146	H.S.BOLT M4X10		2		
195	JM23100148	H.S.BOLT M6X20 WITH GLUE		1		
196	JM23100150	SELLO		1		
197	JM23100149	ARANDELA DE PRESIÓN 5 P/LS0815FL		2		
198	JM23100152	PERNO PARA LS1017L		1		
199	JM23100151	ARANDELA DE PRESIÓN 6 P/LS0815FL		4		
200	JM23100153	BLADE BOLT P/LS1018L		1		
201	JM23100190	ARANDELA ESPECIAL 6 P/LS0815FL		4		
202	JM23100016	ARANDELA PLANA 4 P/LS0815FL		2		
203	JM23100016	ARANDELA PLANA 4 P/LS0815FL		1		
204	JM23100016	ARANDELA PLANA 4 P/LS0815FL		1		
205	JM23100016	ARANDELA PLANA 4 P/LS0815FL		1		
206	JM23100016	ARANDELA PLANA 4 P/LS0815FL		2		
207	JM23100016	ARANDELA PLANA 4 P/LS0815FL		2	*	
207-1	JM23100016	ARANDELA PLANA 4 P/LS0815FL	O	1		
208	JM23100016	ARANDELA PLANA 4 P/LS0815FL		1		
209	JM23100016	ARANDELA PLANA 4 P/LS0815FL		2		
210	JM23100016	ARANDELA PLANA 4 P/LS0815FL		1		
211	JM23100016	ARANDELA PLANA 4 P/LS0815FL		1		
212	JM23100016	ARANDELA PLANA 4 P/LS0815FL		2		
213	JM23100016	ARANDELA PLANA 4 P/LS0815FL		2		
214	JM23100033	PERNO LISO		2		
215	JM23100033	PERNO LISO		1		
216	JM23100033	PERNO LISO		1		
217	JM23100033	PERNO LISO		1		
218	JM23100033	PERNO LISO		1		
219	JM23100033	PERNO LISO		1		
220	JM23100033	PERNO LISO		1		
221	JM23100033	PERNO LISO		1		
222	JM23100033	PERNO LISO		6		
223	JM23100033	PERNO LISO		2		

224	JM23100007	ARANDELA PLANA 8 P/LS0815FL		2			
225	JM23100007	ARANDELA PLANA 8 P/LS0815FL		2			
226	JM23100007	ARANDELA PLANA 8 P/LS0815FL		2			
227	JM23100007	ARANDELA PLANA 8 P/LS0815FL		4			
228	JM23100007	ARANDELA PLANA 8 P/LS0815FL		2			
229	JM23100007	ARANDELA PLANA 8 P/LS0815FL		2	*		
230	JM23100041	ARANDELA P/LS1017L		3			
231	JM23100041	ARANDELA P/LS1017L		1			
232	JM23100089	CROSS HEAD SCREW M5X12		1			
233	JM23100089	CROSS HEAD SCREW M5X12		2			
234	JM23100089	CROSS HEAD SCREW M5X12		1			
235	JM23100089	CROSS HEAD SCREW M5X12		1			
236	JM23100015	SPRING WASHER 4 P/LS1017 /LS 1018		1			
237	JM23100015	SPRING WASHER 4 P/LS1017 /LS 1018		1			
238	JM23100015	SPRING WASHER 4 P/LS1017 /LS 1018		2			
239	JM23100015	SPRING WASHER 4 P/LS1017 /LS 1018		2			
240	JM23100035	ANILLO P/LS0815FL		1			
241	JM23100035	ANILLO P/LS0815FL		2	*		
241-1	JM23100035	ANILLO P/LS0815FL	O	1			
242	JM23100019	TORNILLO M4X18 P/LS0815FL		2	*		
242-1	JM23100019	TORNILLO M4X18 P/LS0815FL	O	1			
243	JM23100083	SOPORTE P/LS1017L		1	*		
243-1	JM23100084	ANILLO CUBRE POLVO P/LS1017 L	X	1			
244	JM23100083	SOPORTE P/LS1017L		1			
245	JM23100084	ANILLO CUBRE POLVO P/LS1017 L		2	*		
245-1	JM23100084	ANILLO CUBRE POLVO P/LS1017 L	O	1			
246	JM23100084	ANILLO CUBRE POLVO P/LS1017 L		1			
247	JM23100104	FLAT WASHER 5		3	*		
248	JM23100009	TUERCA DE BLOQUEO M10 P/LS0 815FL		1	*		
249	JM23100009	TUERCA DE BLOQUEO M10 P/LS0 815FL		1			
250	JM23100034	TORNILLO HEXAGONAL M6X28 P /LS0815FL		2	*		
250-1	JM23100034	TORNILLO HEXAGONAL M6X28 P /LS0815FL	O	1			
251	JM23100069	LASER CORD CLAMP		1			
252	JM23100069	LASER CORD CLAMP		1			
253	JM23100071	ARANDELA 6 P/LS0815FL		1			
254	JM23100072	ABRAZADERA DE CABLE PARA LS 1017L y LS1018L		1	*		
254-1	JM23100194	CAJA DE CAMPO P/LS1017L	<	1			
255	JM23100073	SOPORTE PARA ENROLLAR CABL E PARA LS1017L y LS1018L		1			
256	JM23100081	BUFFER		1	*		
257	JM23100082	SEPARADOR DEL RODAMIENTO P/LS1017L		1			
258	JM23100098	MANGA DE ENLACE P/LS0815FL		1			

259	JM23100124	BRIDA INTERNA P/LS1017L		1			
260	JM23100151	ARANDELA DE PRESIÓN 6 P/LS0815FL		3			
261	JM23100167	TORNILLO M4X16 P/LS0815FL		5	*		
261-1	JM00000217	SELF TAPPING SCREW ST4.2X18	X	6			
262	JM23100167	TORNILLO M4X16 P/LS0815FL		1	*		
262-1	JM00000217	SELF TAPPING SCREW ST4.2X18	X	1			
263	JM23100167	TORNILLO M4X16 P/LS0815FL		2	*		
263-1	JM00000217	SELF TAPPING SCREW ST4.2X18	X	1			
264	JM23100167	TORNILLO M4X16 P/LS0815FL		2	*		
264-1	JM00000217	SELF TAPPING SCREW ST4.2X18	>	2			
265	JM23100006	TORNILLO M5X20 P/LS0815FL		4	*		
265-1	JM23200029	PERNO M5x18 P/LS1810L	X	4			
266	JM23100149	ARANDELA DE PRESIÓN 5 P/LS0815FL		2			
267	JM23100149	ARANDELA DE PRESIÓN 5 P/LS0815FL		2			
268	JM23100149	ARANDELA DE PRESIÓN 5 P/LS0815FL		2			
269	JM23100066	PERNO MARIPOSA M6x20 PARA LS1017L y LS1018L		2			
270	JM23100390	ASAMBLE DE LASER PARA LS1017L - LS1018L		1			
270		INC. 64,66,71,72,120,123-131,					
270		INC. 194,202,206,214					
272	JM23100500	EXTENSION WING		2			
273	JM23100016	ARANDELA PLANA 4 P/LS0815FL		1			
274	JM23100019	TORNILLO M4X18 P/LS0815FL		1			
275	JM23100016	ARANDELA PLANA 4 P/LS0815FL		1			
276	JM23100019	TORNILLO M4X18 P/LS0815FL		1			
277	JM23100016	ARANDELA PLANA 4 P/LS0815FL		1			
278	JM00000217	SELF TAPPING SCREW ST4.2X18		1			
279	JM23100007	ARANDELA PLANA 8 P/LS0815FL		1			
280	JM23100007	ARANDELA PLANA 8 P/LS0815FL		1			
281	JM23500053	ARANDELA P/LS0815FL		1			
282	JM23100035	ANILLO P/LS0815FL		1			
283	JM23100034	TORNILLO HEXAGONAL M6X28 P/LS0815FL		1			
284	JM23100007	ARANDELA PLANA 8 P/LS0815FL		1			
285	JM00000216	EXTERNAL TOOTHED LOCK WASHER 5		1			
286	JM23100035	ANILLO P/LS0815FL		1			
287	JM23100041	ARANDELA P/LS1017L		1			
288	JM23100016	ARANDELA PLANA 4 P/LS0815FL		1			
289	JM2708B060	WARNING LABEL		2			
292	JM23100039	LOCKING ROD		1			
293	JM23100038	ELASTIC PIN 4X20		1			
294	JM23100009	TUERCA DE BLOQUEO M10 P/LS0815FL		1			
295	JM23100028	WORKING TABLE		1			
296	JM23100083	SOPORTE P/LS1017L		1			
297	JM23100084	ANILLO CUBRE POLVO P/LS1017L		1			
298	JM23100081	BUFFER		1			
299	JM23100087	LOCK SCREW M6X8		2			

300	JM23100081	BUFFER		1		
301	JM23100085	LINEAR BEARING		1		
302	JM23100085	LINEAR BEARING		1		
303	JM23100085	LINEAR BEARING		1		
305	JM23100114	LINK PIN		1		
306	JM23100147	BUFFER		1		
308	JM23200004	BEVEL SCALE		1		
309	JM23180072	CAUTION LABEL		1		
311	JM23180079	CAUTION LABEL		1		
312	JM23100064	SUB FENCE		1		
313	JM23280058	CAUTION LABEL		1		
315	JM00000060	CAUTION LABEL		1		
316	810496-5	Etiqueta de precaución		1		
317	JM23280074	NAME PLATE		1		
318	JM23180069	CAUTION LABEL		1		
319	JM23180068	CAUTION LABEL		1		
A01	JM23100500	EXTENSION WING		1	*	
A01-1	JM23100500	EXTENSION WING	<	2		
A02	782230-2	Llave fija 13-3		1	*	
A02-1	JM23100197	BOX WRENCH 13-3	O	1		
A03	JM23000176	SAW BLADE		1	*	
A03-1	JM00000387	SAW BLADE	O	1		
A04	JM27000328	PLACA TRIANGULAR P/MLT100		1		
A05	JM23100501	DUST BAG ASSEMBLY		1		
A06	JM23100502	PRENSA PARA LS1018L		1		

Por favor declare No. de Partes cuando ordene.

Fecha de Impresión 21/01/2025